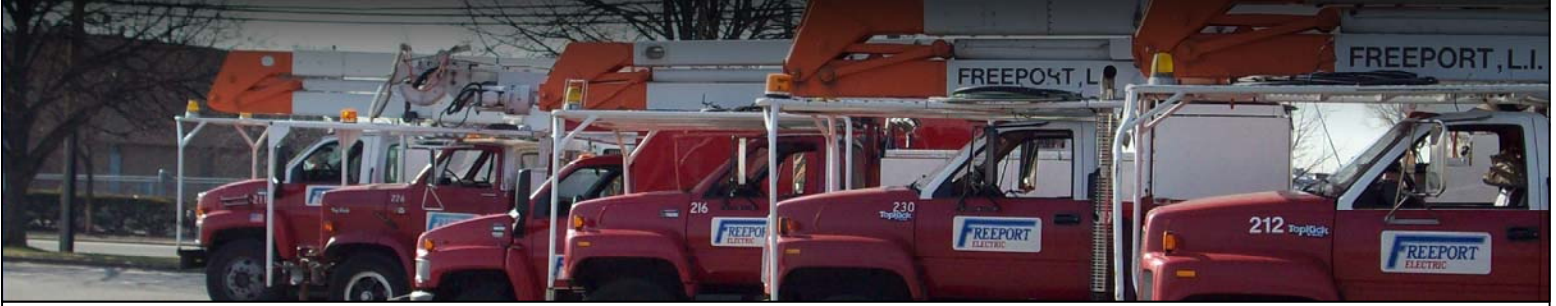


WHERE DOES THE RESPONSIBILITY LIE?

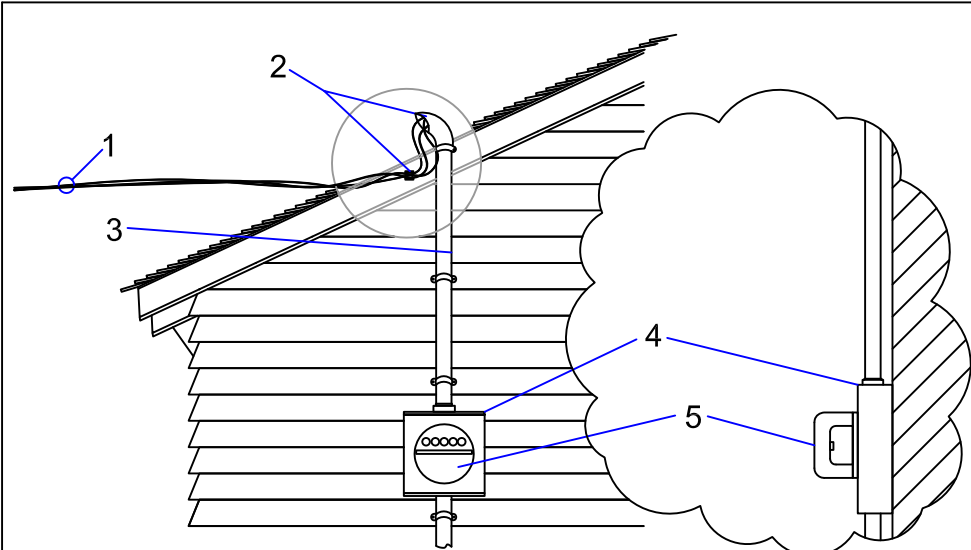


What you should know about your Electrical Service Equipment

We are often asked by our customers, "Who is responsible for maintaining and repairing the equipment that provided electricity to my home?" The customer/owner is responsible for installing, maintaining and repairing all equipment up to and including the service connection point (Point of Attachment) except for the electric meter. Freeport Electric is responsible for the meter and for providing service to your meter, not for maintaining the equipment or appliances using the service.

An Overhead Electric Service consists of the following equipment:

DESCRIPTION	Customer/Owner Responsible	Freeport Electric Responsible
1. Electric lines that run from the utility pole to your home.		✓
2. Weather-Head and Point of Attachment where the electric lines connect to your home.	✓	
3. Service pipe and cable is the wire that runs from the Weather-Head to the electric meter and from the electric meter to the service panel in your home.	✓	
4. Meter pan, where the electric meter is installed.	✓	
5. Electric Meter which measures your use of electricity.		✓
6. Main Service Panel, which includes your fuses/circuit breakers for your electric service.	✓	



Freeport Electric is required to supply power to the point of attachment at your residence. However, it is your responsibility to make sure that your electrical service is functioning properly. Be advised that if your service has been exposed to water, it is your responsibility to have the electrical service inspected and certified by a licensed electrician prior to utilization.

Freeport Electric Emergency
 516-378-0146
www.FreeportElectric.com